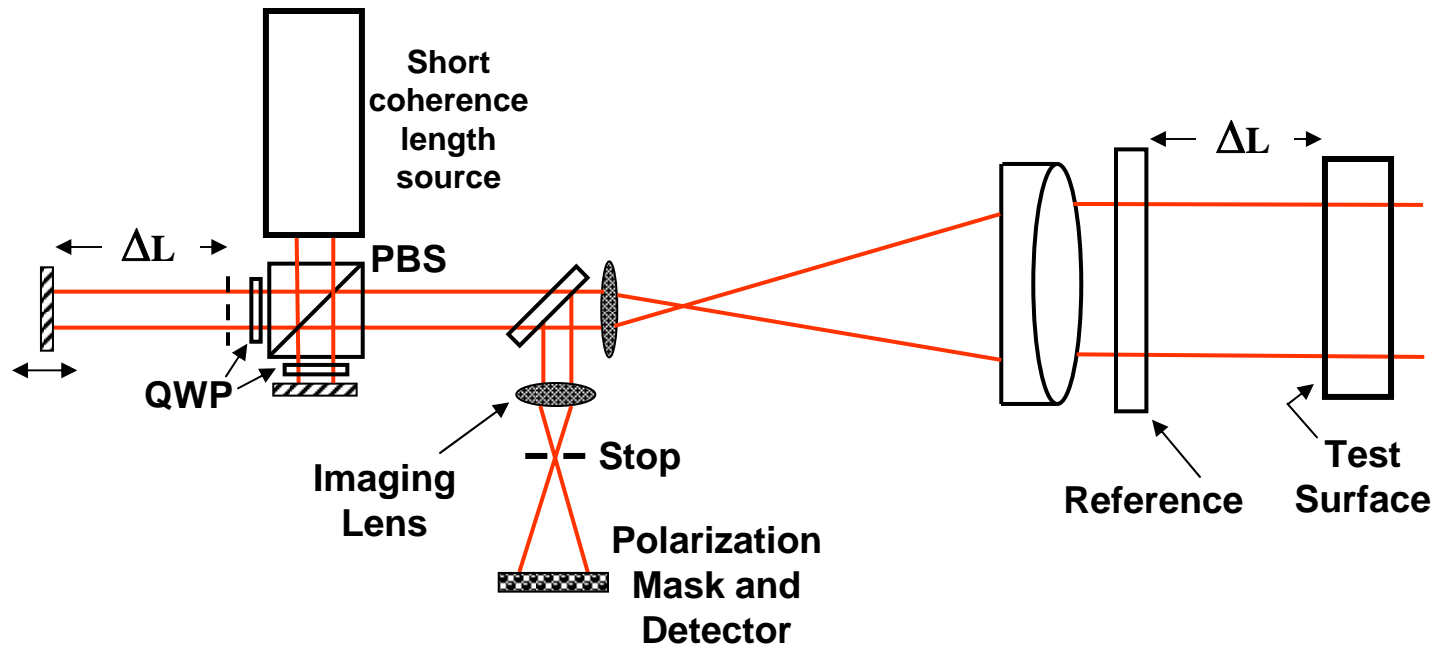


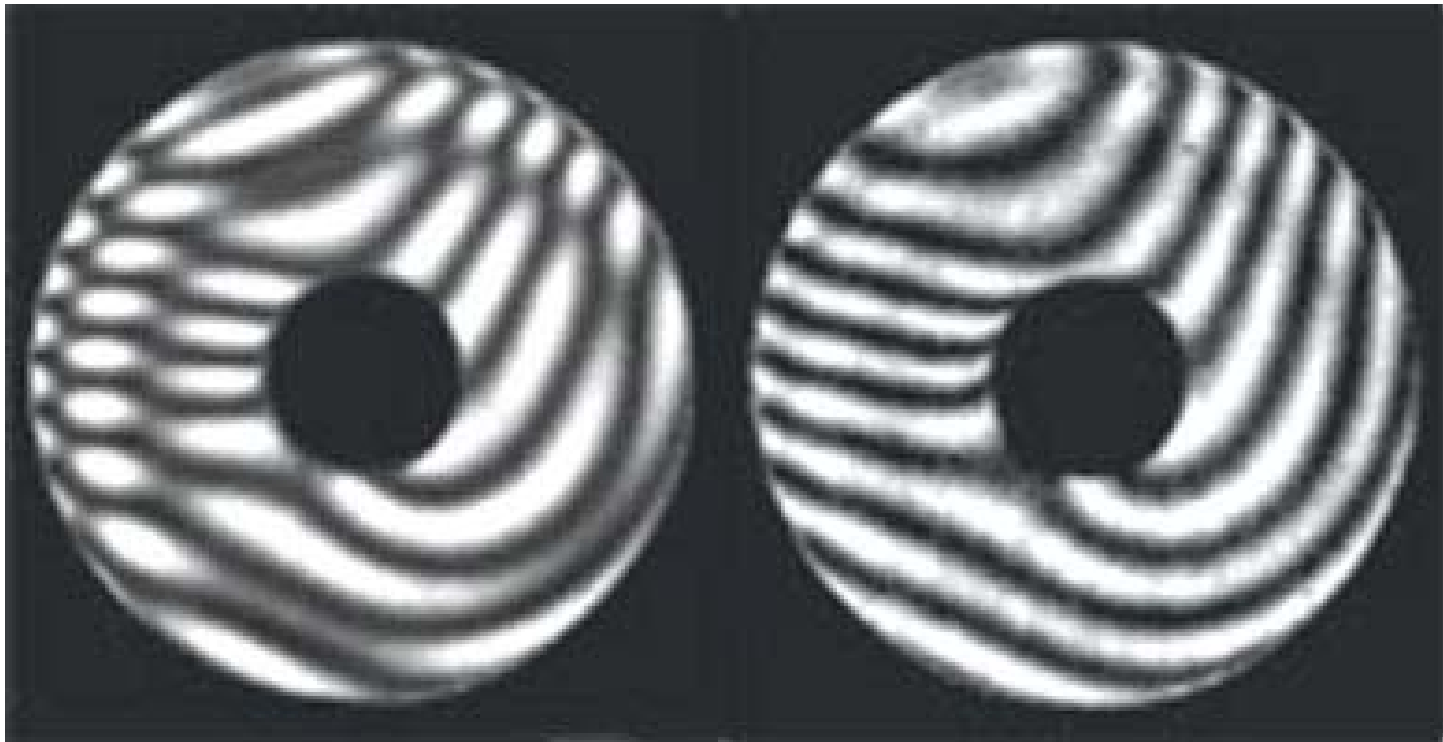
# Simultaneous Phase-Shifting Fizeau – Short Coherence Length Source



**Interference pattern resulting from long path length source beam reflected off reference and short path length source beam reflected off test surface.**

**Test and reference beams have orthogonal polarization.**

# Interference Fringes Obtain Testing a Thin Glass Plate



**a) Long coherence  
length source**

**b) Short coherence  
length source**