

Prerequisites to installing SolidWorks:

Please see the following link for system requirements first:

<http://www.solidworks.com/pages/services/SystemRequirements.html?PID=252>

**NOTE: SolidWorks Education Edition, Student Edition, and Student Design Kit do not run on 64-bit Windows operating systems.**

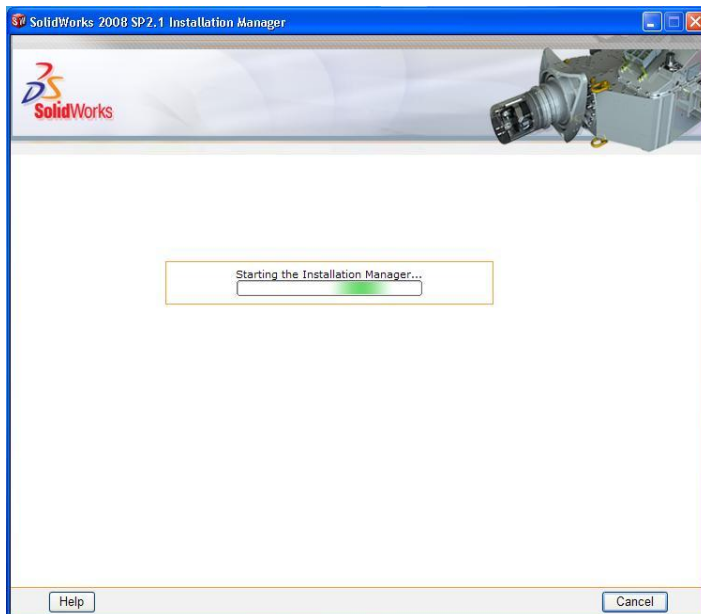
**The product being supplied through this distribution mechanism is the SolidWorks Education Edition and as such will not run on 64-bit Windows operating systems.**

If you determine that your system meets the minimum requirements, you can proceed to installing the UA VPN (Virtual Private Network) client. The VPN client must be running during installation and later during operation of SolidWorks. To install the client, complete the following:

Go to <http://www.sitelicense.arizona.edu>, click on No Cost Software, scroll down to VPN Client, click on Download VPN Client Software/Docs. If you require assistance installing and using the VPN client use the provided sitelicense walkthrough under the Installation Instructions. For other questions regarding the VPN Client call the 24/7 Support Center at 520-626-TECH(8324).

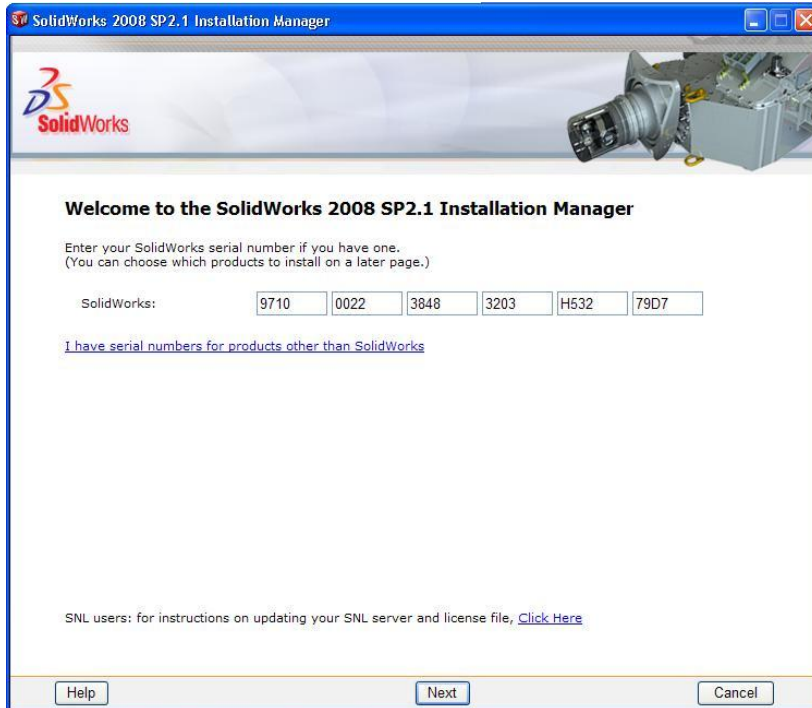
After the VPN Client has been installed and is connected, continue with the SolidWorks installation.

Extract the “Zipped” file download from SiteLicense to a directory of your choice. Double click on SolidWorks 2008 SP4.0 Installation Manager to initiate the installation. You will see the following screen:

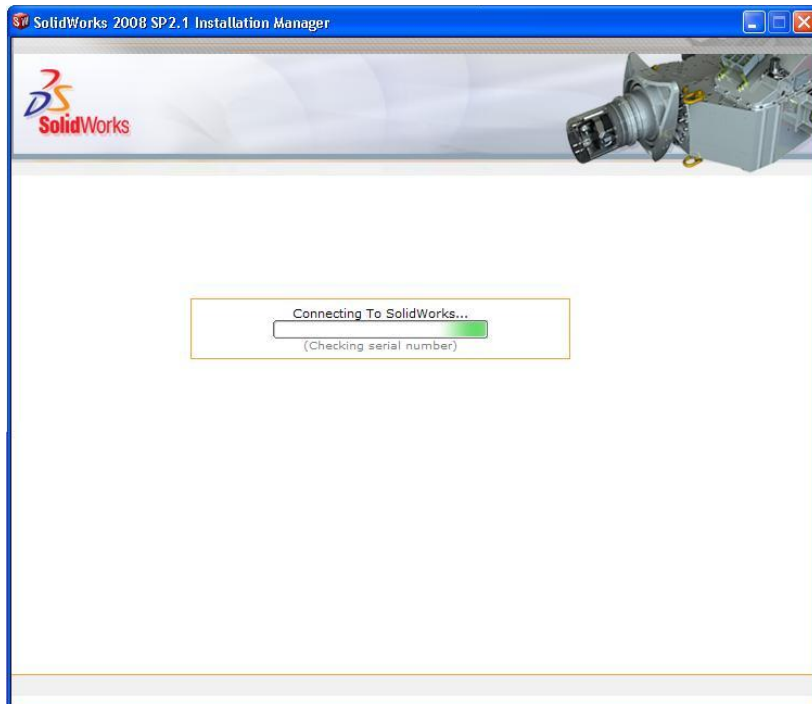


After the Installation Manager starts, you will be prompted for the Serial Number.

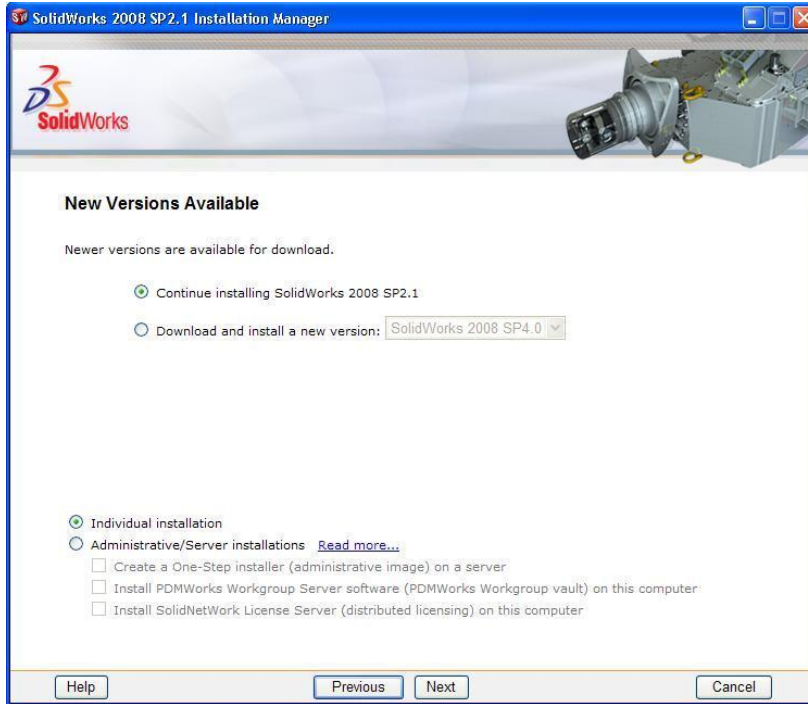
Enter this Serial Number: 9710 0022 3848 3203 H532 79D7



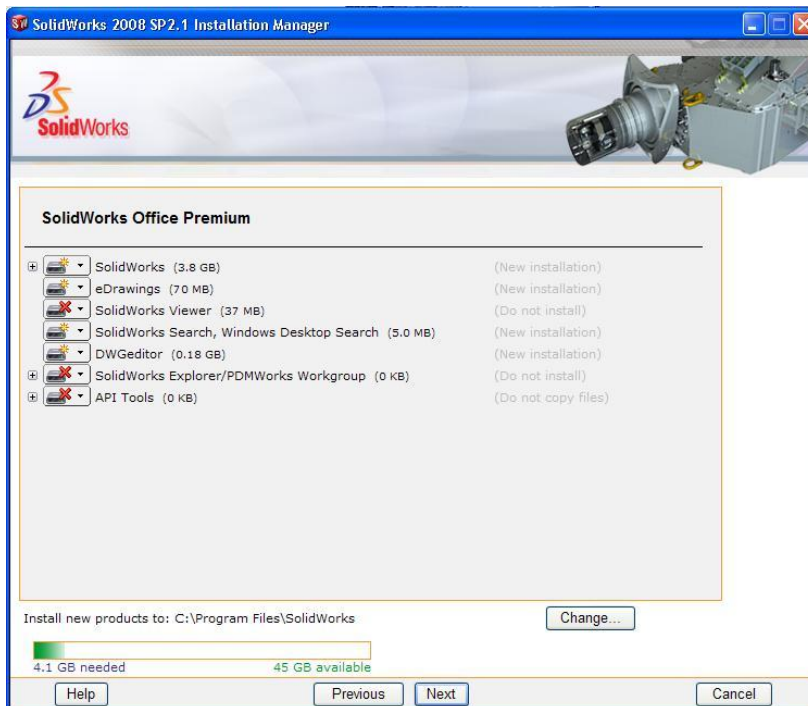
SolidWorks will then check for updates.



Verify that “Continue installing SolidWorks 2008 SP2.1” is selected. Updates should be installed after the initial installation.

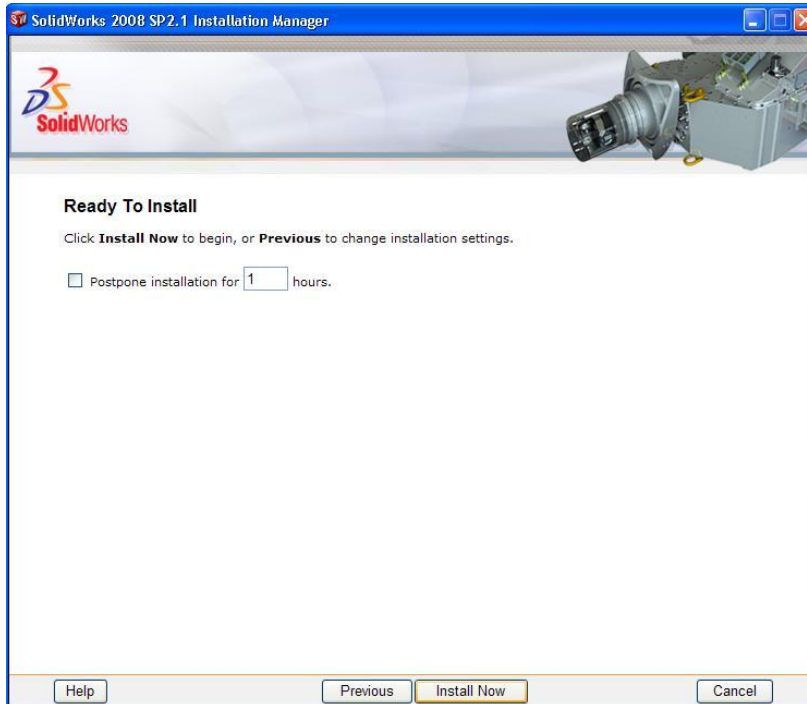


Allow for the default installation options to be used and click “Next”

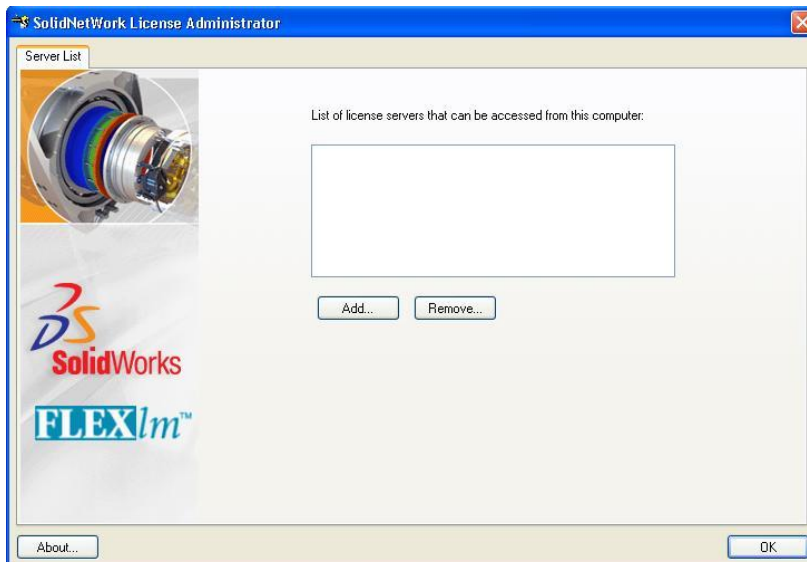


Verify that “Postpone installation for ( ) hours” is NOT checked. Click the Install Now option.

The installer run for several minutes.

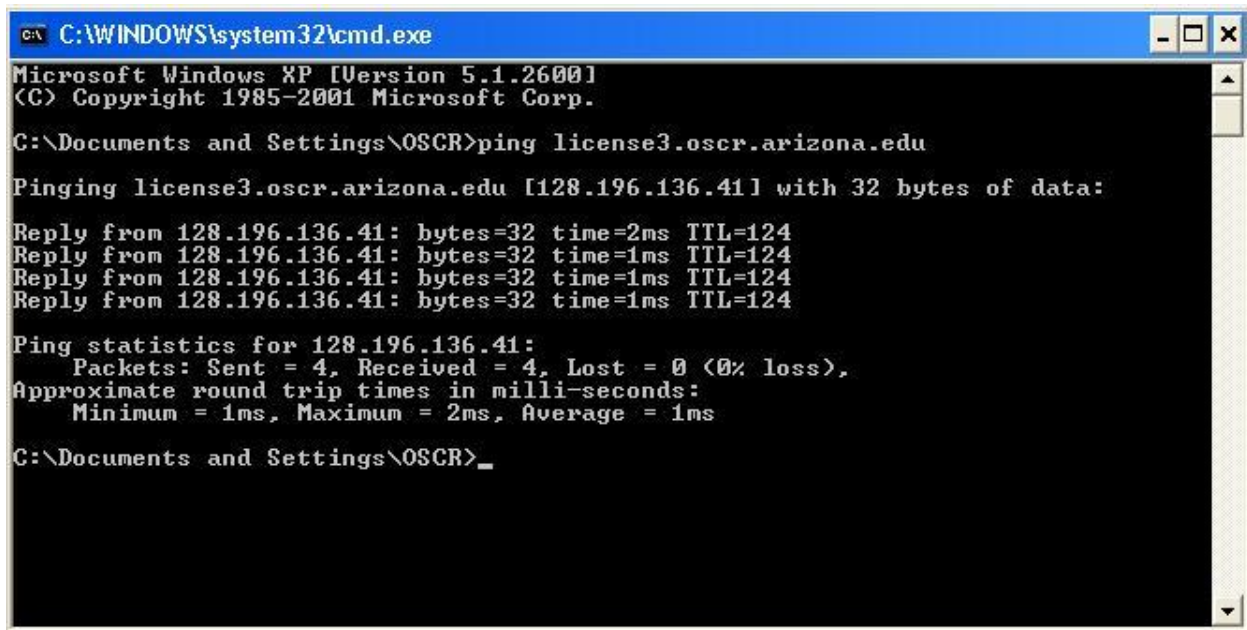


The Installer will ask you for the address of a license server. This is why you need to have the VPN installed and running. Click add, in the address box type: 25734@license3.oscr.arizona.edu



**Troubleshooting communications to the license server:**

Skip this page if you did not receive any errors in the previous step



```
C:\WINDOWS\system32\cmd.exe
Microsoft Windows XP [Version 5.1.2600]
(C) Copyright 1985-2001 Microsoft Corp.

C:\Documents and Settings\OSCR>ping license3.oscr.arizona.edu

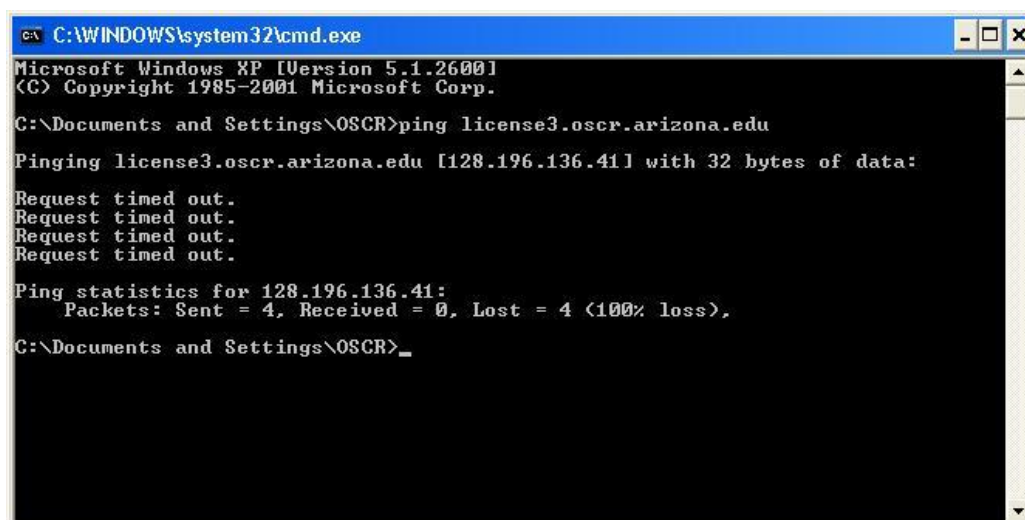
Pinging license3.oscr.arizona.edu [128.196.136.41] with 32 bytes of data:

Reply from 128.196.136.41: bytes=32 time=2ms TTL=124
Reply from 128.196.136.41: bytes=32 time=1ms TTL=124
Reply from 128.196.136.41: bytes=32 time=1ms TTL=124
Reply from 128.196.136.41: bytes=32 time=1ms TTL=124

Ping statistics for 128.196.136.41:
    Packets: Sent = 4, Received = 4, Lost = 0 (0% loss),
    Approximate round trip times in milli-seconds:
        Minimum = 1ms, Maximum = 2ms, Average = 1ms

C:\Documents and Settings\OSCR>
```

If you receive the following error: “Could not get information from this server” that means you are not connected to the internet or the VPN. Click the Windows Start button, click Run, type cmd and hit enter. This will bring up a command line interface. In the command line, type “ping license3.oscr.arizona.edu” without the quotes. If you receive a response like in the above image you are connected to the internet and VPN fine, there is another problem, if your response resembles the below image, you are probably not connected to the VPN.



```
C:\WINDOWS\system32\cmd.exe
Microsoft Windows XP [Version 5.1.2600]
(C) Copyright 1985-2001 Microsoft Corp.

C:\Documents and Settings\OSCR>ping license3.oscr.arizona.edu

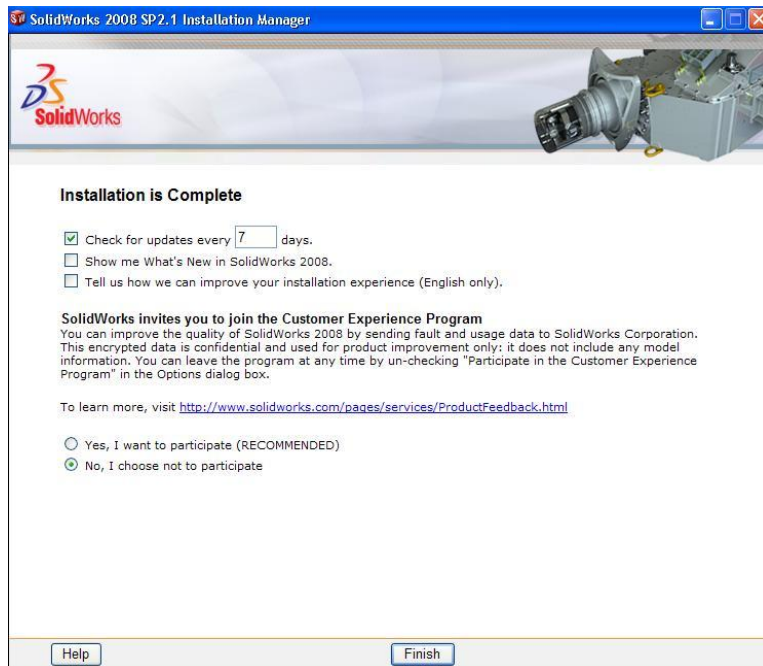
Pinging license3.oscr.arizona.edu [128.196.136.41] with 32 bytes of data:

Request timed out.
Request timed out.
Request timed out.
Request timed out.

Ping statistics for 128.196.136.41:
    Packets: Sent = 4, Received = 0, Lost = 4 (100% loss),

C:\Documents and Settings\OSCR>
```

After the installation is completed Check, “Check for updates every 7 days.” Change the amount of days to suit your needs. The other check boxes in this window are also unnecessary.



You should be able to run the software now. Remember, in order for SolidWorks to run on your system, you have to establish access to the U of A network through the VPN mentioned at the beginning of this document.