

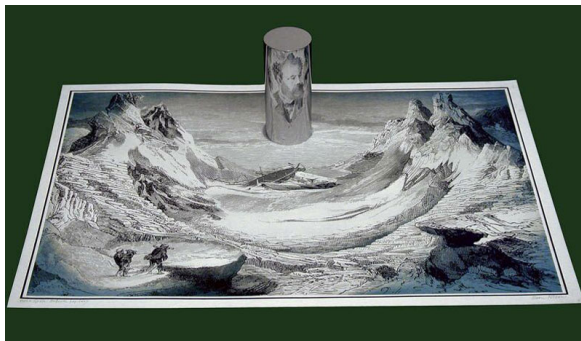
Anamorphic art is art that appears distorted upon first glance. When that same piece of art is viewed from a particular angle, or with a mirror or lens, the image becomes “normal”.



There are several types of anamorphic art, and two types that use mirrors. Conical (cone) anamorphisms views an image from the top down. Cylindrical anamorphisms views an image from the side.

Creating anamorphic art by hand is a long tedious process. Today we can use computers to distort normal pictures, so we can view them with a cylindrical mirror, to turn them back into normal pictures.

While it may seem daunting to create your own anamorphic art. It is much simpler than you may think.



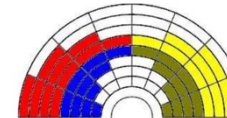
Use this link, or scan the QR code for a template to draw your own anamorphic art picture.

<https://wp.optics.arizona.edu/oscoutreach/wp-content/uploads/sites/75/2019/04/anamorphic-template.jpg>



Draw your design in the square box, and transfer the same colors to the corresponding curved boxes as seen below.

Example: It helps to put your image right underneath the radial grid, and the radial grid should look like a rainbow shape (the arch should be at the top of the paper) while you transfer your drawing



You can use the magic cylinder as you draw to see if it is accurate as you go along.
You would turn the paper upside-down and put the magic cylinder on the circle to see your image

For the cylinder, you can use a toilet paper tube, or paper towel tube wrapped in mylar, or smooth aluminum foil. Place the cylinder in the circle to see your original image.

